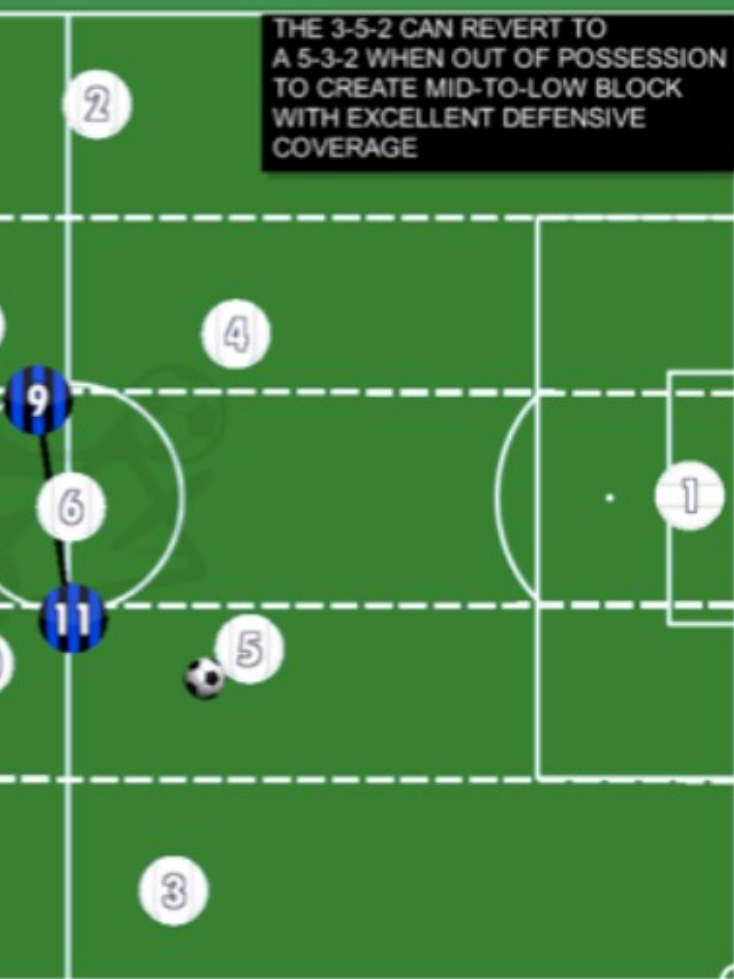


ADVANTAGES AND DISADVANTAGES OF A 3-5-2

POSSESSION



3-5-2 KEY FACTORS WHEN IN

CB'S MARK ZONALLY COVERING CM'S
COMMUNICATION IS KEY WHEN

WB'S TUCK IN TO CREATE A

THREE CM'S PROVIDE CENTRAL COVER
OPPOSITION INTO W

WHEN THE BALL IS PLAYED OUT WIDE,
SHUFFLES OUT TO SUPPORT THE WB C
ARE NOT OUTNUM

THE TWO CF'S WORK TOGETHER TO EITHER
AREAS. I.E IF THE OPPOSITION FB HAS
AND PREVENT CENTRA

NATURAL ADVS:

- 5 DEFENDERS PROVIDE EXTRA DEFENSIVE SOLIDITY.
- EXCELLENT ZONAL COVERAGE WHEN DEFENDING WITH CENTRAL, HALF-SPACE AND WIDE AREAS ACCOUNTED FOR.
- SUITED TO PLAYING NARROW TO AVOID CENTRAL PENETRATION.
- V
-
- CF
- W